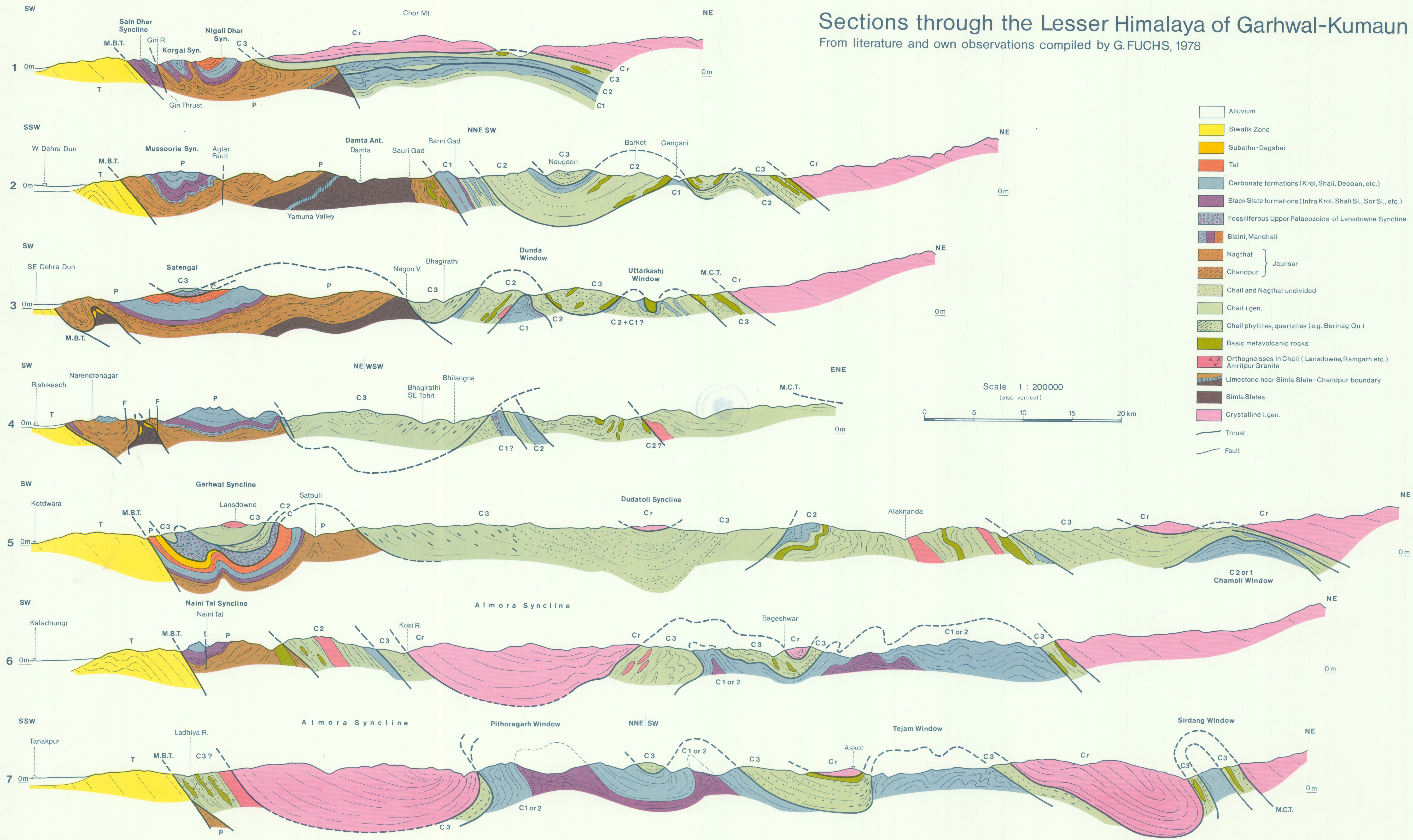


# Sections through the Lesser Himalaya of Garhwal-Kumaun

From literature and own observations compiled by G. FUCHS, 1978



- Alluvium
- Siwalik Zone
- Subathu-Dagshai
- Tal
- Carbonate formations (Krol, Shali, Deoban, etc.)
- Black Slate formations (Infra Krol, Shali Sl., Sor Sl., etc.)
- Fossiliferous Upper Palaeozoics of Lansdowne Syncline
- Blaini, Mandhali
- Nagthat
- Chandpur
- Chail and Nagthat undivided
- Chail i.gen.
- Chail phyllites, quartzites (e.g. Berinag Qu.)
- Basic metavolcanic rocks
- Orthogneisses in Chail (Lansdowne, Ramgarh etc.)
- Amritpur Granite
- Limestone near Simla Slate-Chandpur boundary
- Simla Slates
- Crystalline i.gen.
- Thrust
- Fault

Scale 1 : 200000  
 (also vertical)